

**Anti-Chicken IgG (H&L) (Fluorescein Conjugated) Secondary Antibody**  
**Polyclonal, Fluorescein (FITC)**  
**Catalog # ASR1084****Specification****Anti-Chicken IgG (H&L) (Fluorescein Conjugated) Secondary Antibody - Product Information**

Description	<b>Anti-CHICKEN IgG (H&amp;L) (RABBIT) Antibody</b>
Conjugate	<b>Fluorescein Conjugated</b>
FP Value	<b>Fluorescein (FITC)</b> <b>3.0 moles Fluorescein (FITC) per mole of IgG</b>
Target Species	<b>Chicken</b>
Clonality	<b>Polyclonal</b>
Application	<b>IF, FC</b>
Application Note	<b>FLISA 1:10,000-1:50,000;IF Microscopy 1:1,000-1:5,000;FlowCytometry 1:500-1:2,500</b>
Physical State	<b>Lyophilized</b>
Host Isotype	<b>IgG</b>
Target Isotype	<b>IgG (H&amp;L)</b>
Buffer	<b>0.02 M Potassium Phosphate, 0.15 M Sodium Chloride, pH 7.2</b>
Immunogen	<b>Chicken IgG whole molecule</b>
Reconstitution Volume	<b>500 µL</b>
Reconstitution Buffer	<b>Restore with deionized water (or equivalent)</b>
Stabilizer	<b>10 mg/mL Bovine Serum Albumin (BSA) - Immunoglobulin and Protease free</b>
Preservative	<b>0.01% (w/v) Sodium Azide</b>

**Anti-Chicken IgG (H&L) (Fluorescein Conjugated) Secondary Antibody - Additional Information****Shipping Condition**

Ambient

**Purity**

This product was prepared from monospecific antiserum by immunoaffinity chromatography using Chicken IgG coupled to agarose beads. Assay by immunoelectrophoresis resulted in a single precipitin arc against anti-Rabbit Serum and Chicken IgG. Some light chain cross reactivity may be observed against chicken immunoglobulins.

**Storage Condition**

Store vial at 4° C prior to restoration. For extended storage aliquot contents and freeze at -20° C or below. Avoid cycles of freezing and thawing. Centrifuge product if not completely clear after standing at room temperature. This product is stable for several weeks at 4° C as an undiluted liquid. Dilute only prior to immediate use.

**Precautions Note**

This product is for research use only and is not intended for therapeutic or diagnostic applications.

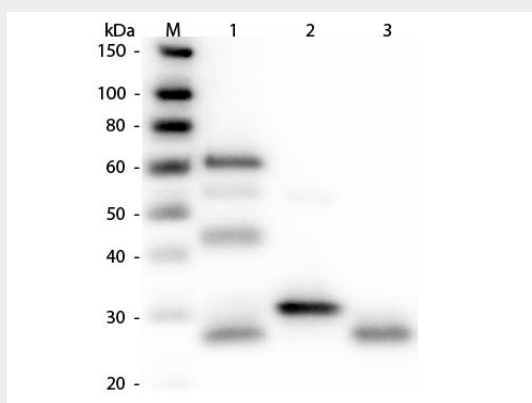
## **Anti-Chicken IgG (H&L) (Fluorescein Conjugated) Secondary Antibody - Protein Information**

## **Anti-Chicken IgG (H&L) (Fluorescein Conjugated) Secondary Antibody - Protocols**

Provided below are standard protocols that you may find useful for product applications.

- [Western Blot](#)
- [Blocking Peptides](#)
- [Dot Blot](#)
- [Immunohistochemistry](#)
- [Immunofluorescence](#)
- [Immunoprecipitation](#)
- [Flow Cytometry](#)
- [Cell Culture](#)

## **Anti-Chicken IgG (H&L) (Fluorescein Conjugated) Secondary Antibody - Images**



Western Blot of Anti-Chicken IgG (H&L) (RABBIT) Antibody . Lane M: 3  $\mu$ l Molecular Ladder. Lane 1: Chicken IgG whole molecule . Lane 2: Chicken IgG F(c) Fragment . Lane 3: Chicken IgG F(ab) Fragment . All samples were reduced. Load: 50 ng per lane. Block: MB-070 for 30 min at RT. Primary Antibody: Anti-Chicken IgG (H&L) (RABBIT) Antibody 1:3,000 for 60 min at RT. Secondary antibody: Anti-Rabbit IgG (GOAT) Peroxidase Conjugated Antibody 1:40,000 in MB-070 for 30 min at RT. Predicted/Observed Size: 25 and 72 kDa for Chicken IgG, 25 kDa for F(c) and F(ab). Chicken F(c) migrates slightly higher.

## **Anti-Chicken IgG (H&L) (Fluorescein Conjugated) Secondary Antibody - Background**

Anti-Chicken IgG/IgY FITC conjugated secondary antibody is ideal for FLOW Cytometry and Immunofluorescence Microscopy.